



Flat 5 Cristopher Court, 13 Western Road, Sutton, SM1 2SX

£1,250 Per month



Cromwells
ESTATE AGENTS

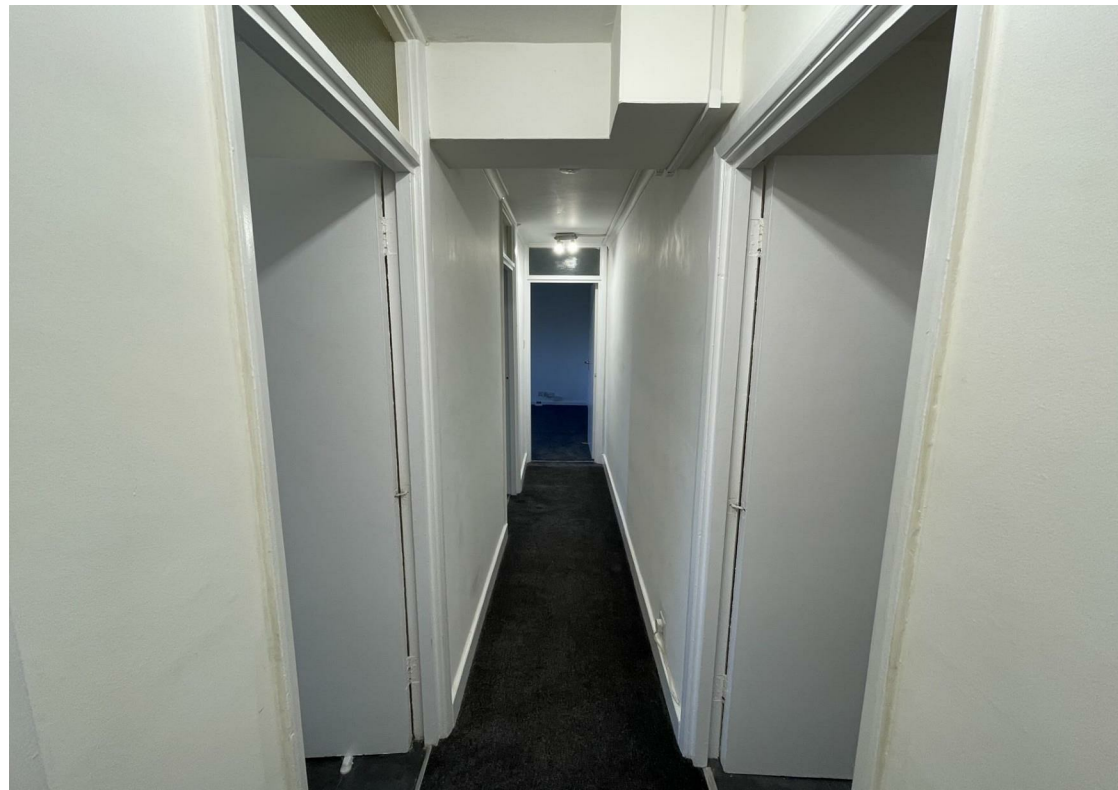


13 Western Road, Sutton, SM1 2SX

Available now is this refurbished one double bedroom first floor apartment with large living room, spacious bedroom, parking space, new kitchen, bathroom, central heating, double glazing, entryphone and more.

Located for easy access to excellent transport links, Sutton Town Centre Shopping and Leisure amenities.

EPC Rating C. Council Tax Band C. 5-week dilapidations deposit





Floor Plan

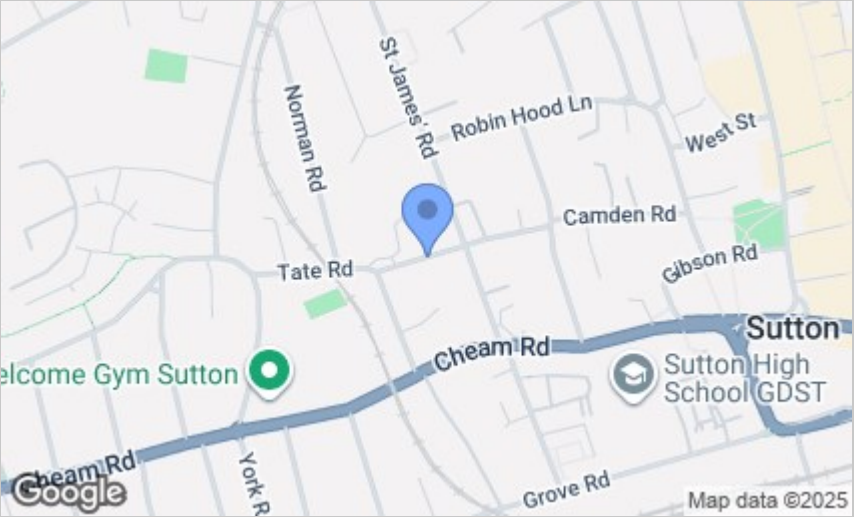


Viewing

Please contact our Cromwells Office on 0208 647 4422 if you wish to arrange a viewing appointment for this property or require further information.

These particulars, whilst believed to be accurate are set out as a general outline only for guidance and do not constitute any part of an offer or contract. Intending purchasers should not rely on them as statements of representation of fact, but must satisfy themselves by inspection or otherwise as to their accuracy. No person in this firms employment has the authority to make or give any representation or warranty in respect of the property.

Area Map



Energy Efficiency Graph

